



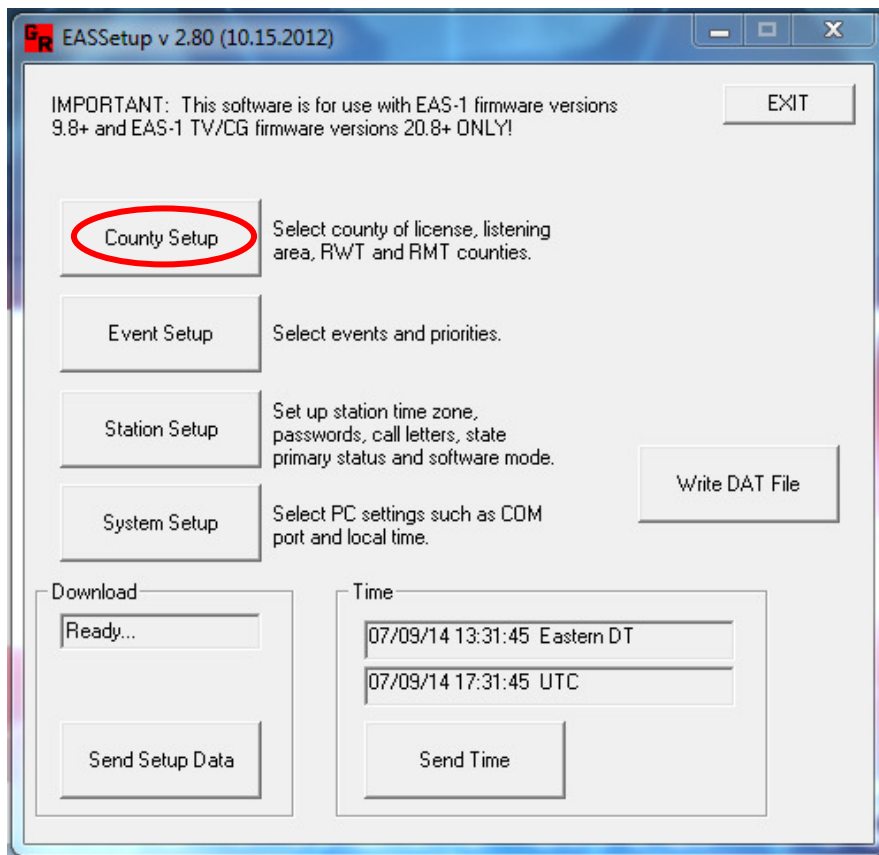
EAS-1 v9.8

EASSetup v2.27

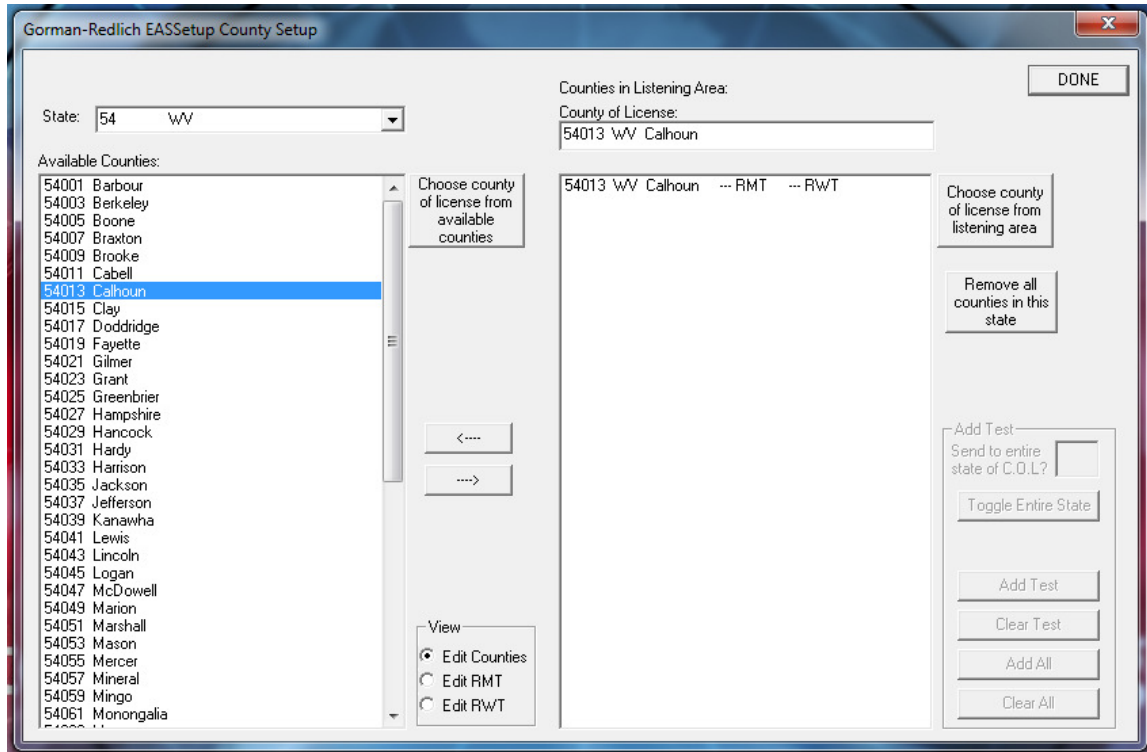
CAP to EAS Decoder v2.27

Please Note: Gorman Redlich EAS devices are programmed by the manufacturer with the “Add All Events to All Counties” enabled for the EAS participant’s county/state. The following instructions are prepared under the assumption that the EAS participant has installed E-prom v.9.8 and downloaded the applicable software.

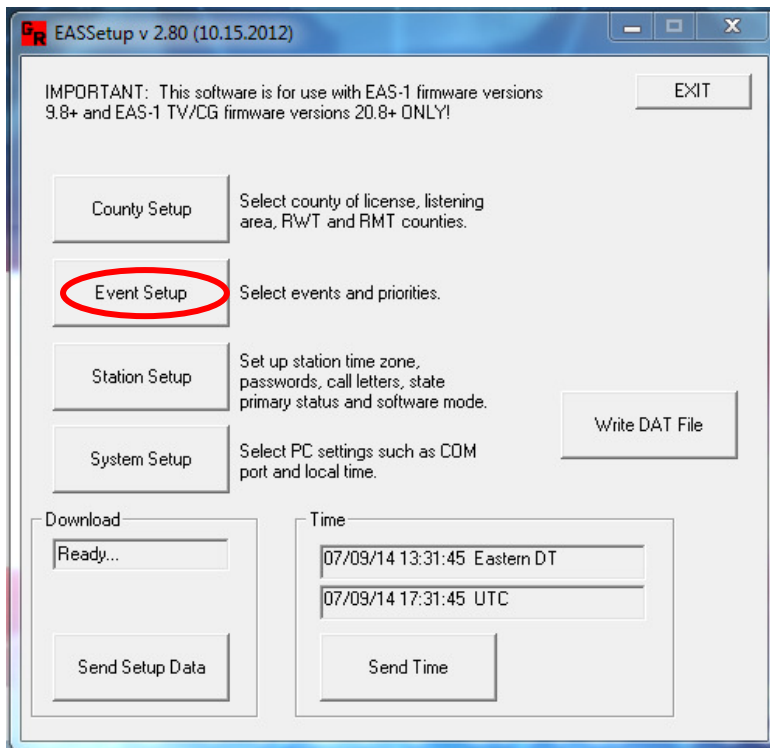
Access the Encoder/Decoder software (EASSetup), select **County Setup**.



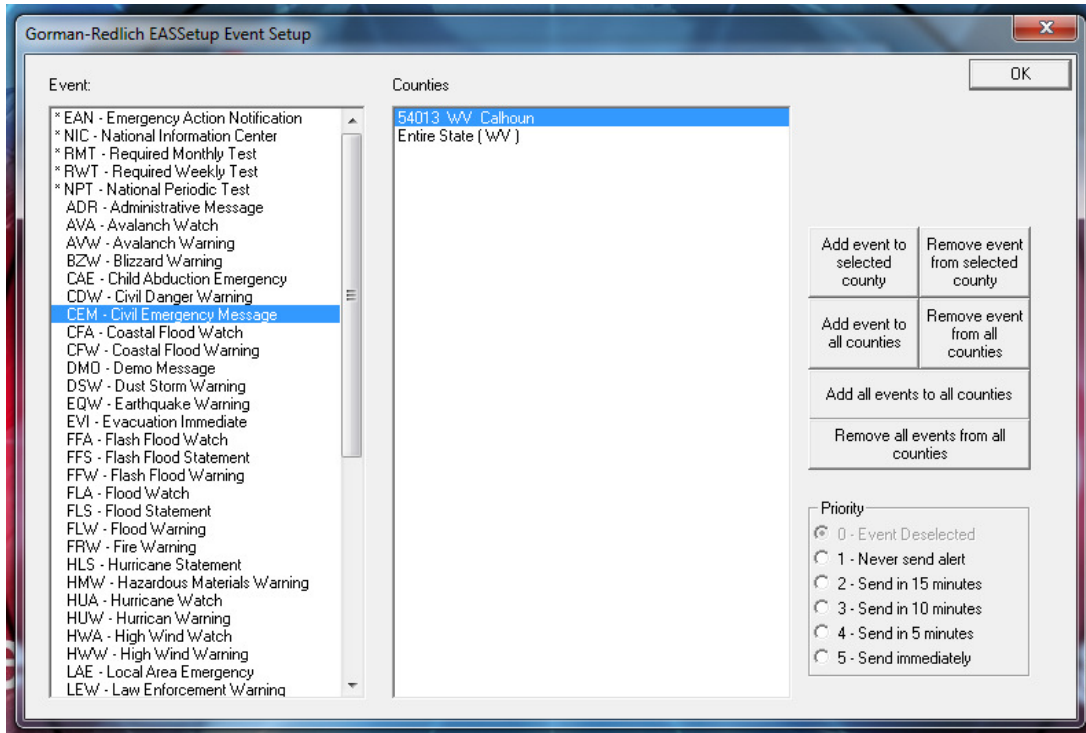
Select your **State** and **County**. Then set the county of license. The state all location code will be associated with the county of license. Select **Done**.



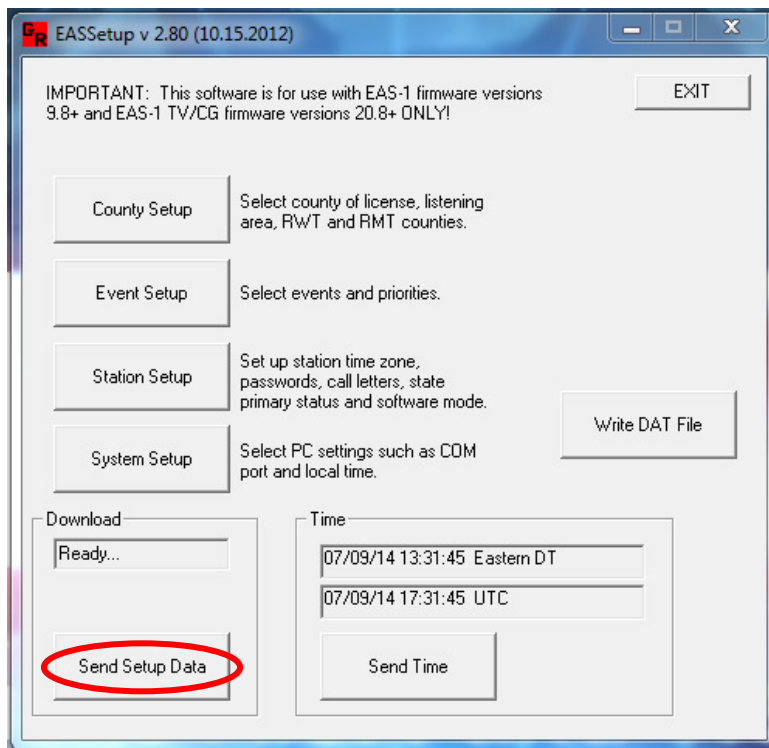
Select **Event Setup**.



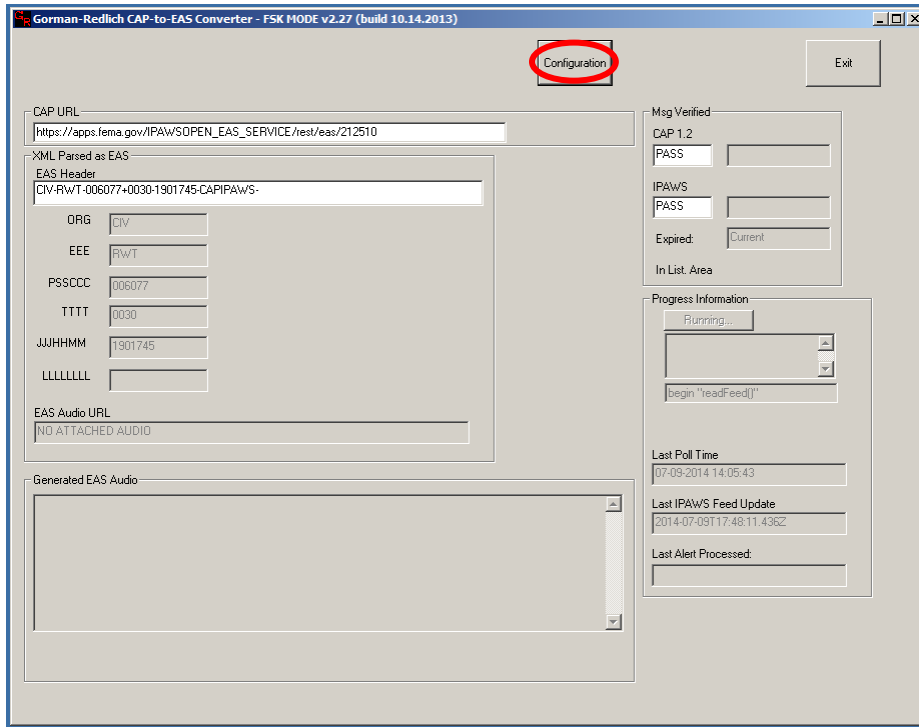
Associate event type NPT to Select the proper event codes for you broadcast area, in accordance with FCC Part 11 and your state EAS plans.



When you are done with setting up the EAS device, select **Send Setup Data** to load the new settings.



To confirm that the CAP to EAS Decoder is set correctly select **Configuration**.



On the left side confirm that the correct listening areas are selected in the **Listening Area Setup**. On the top right in the **Feed URL Setup** add any additional CAP feeds. Then select **OK** in the bottom right.

