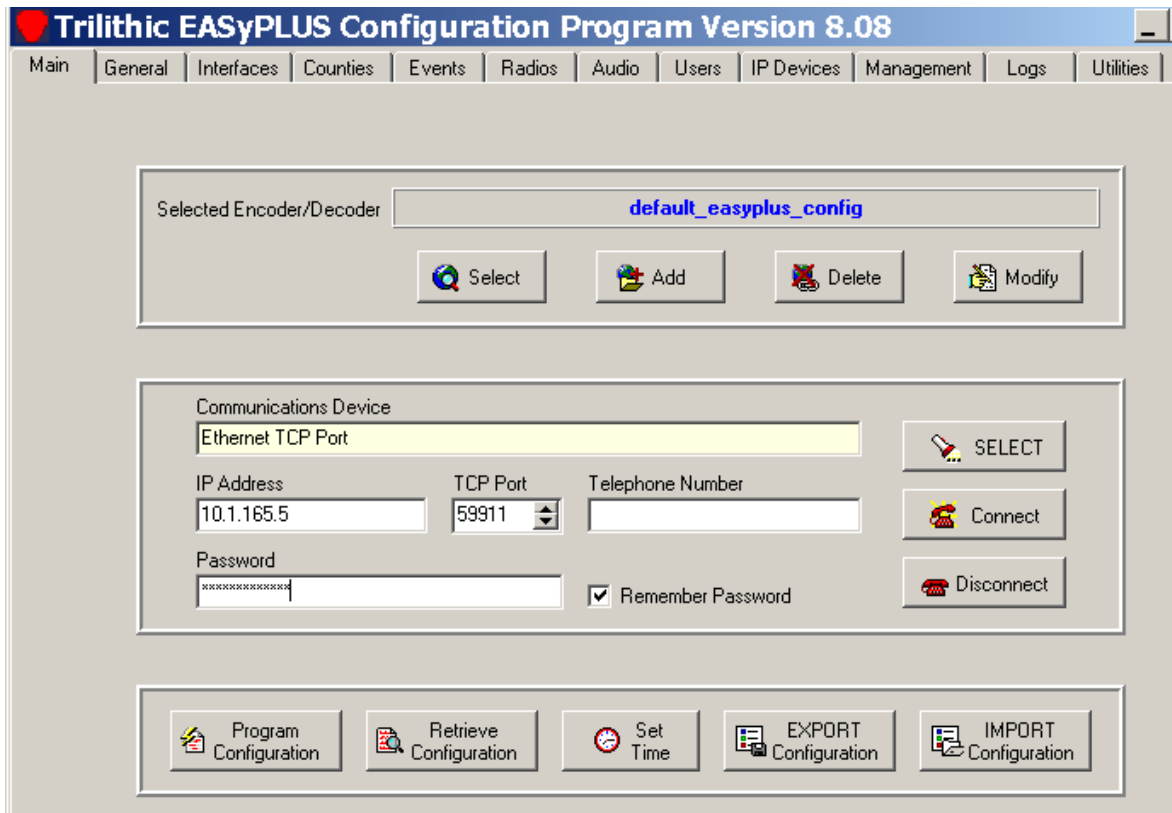




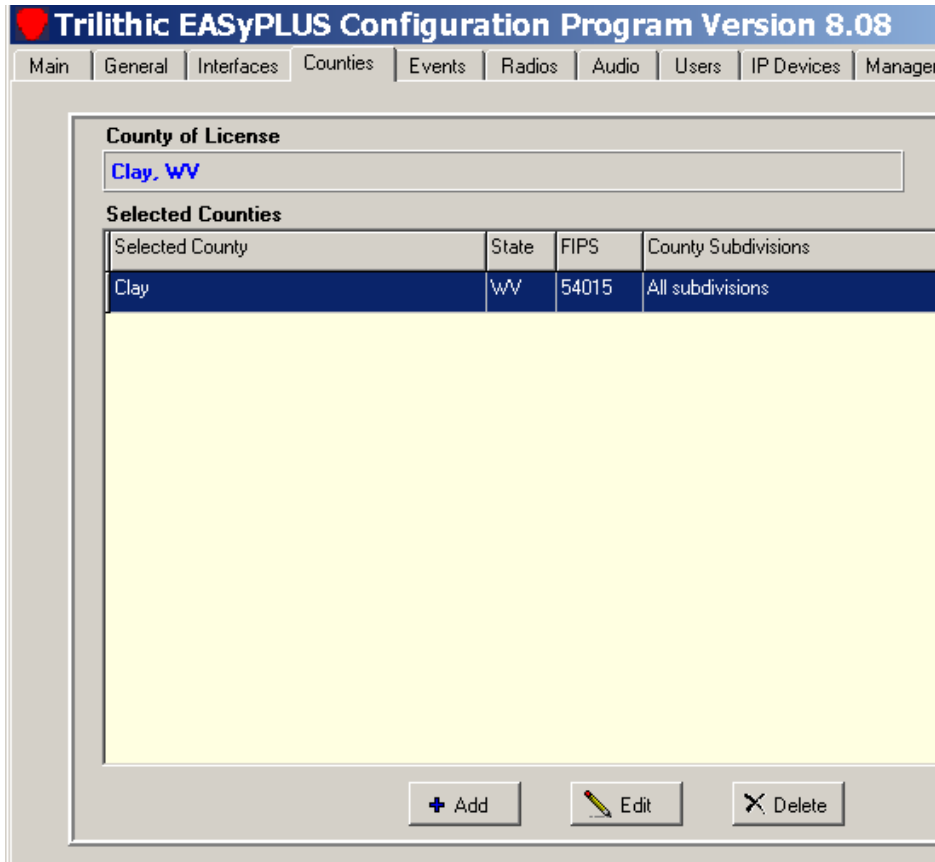
Based on EASyPLUS or EASyCAST Configuration version 8.08

Please Note: The following instructions are prepared under the assumption that the EAS participant is not performing initial setup and is familiar with configuring Trilithic products.

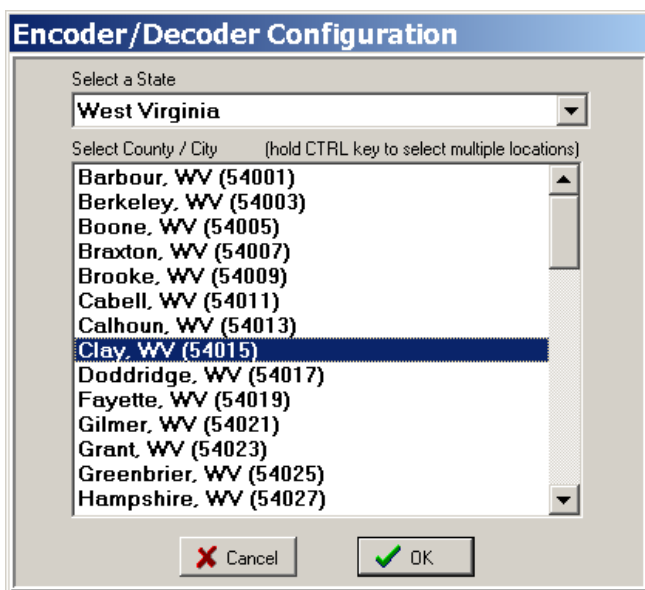
Start the EASyPLUS or EASyCAST Configuration software, and on the Main tab enter the Administrator password (the default is "Administrator"). Click the Retrieve Configuration button to bring the software settings up to date.



Select the Counties tab at the top of the software and click the Add button at the bottom.

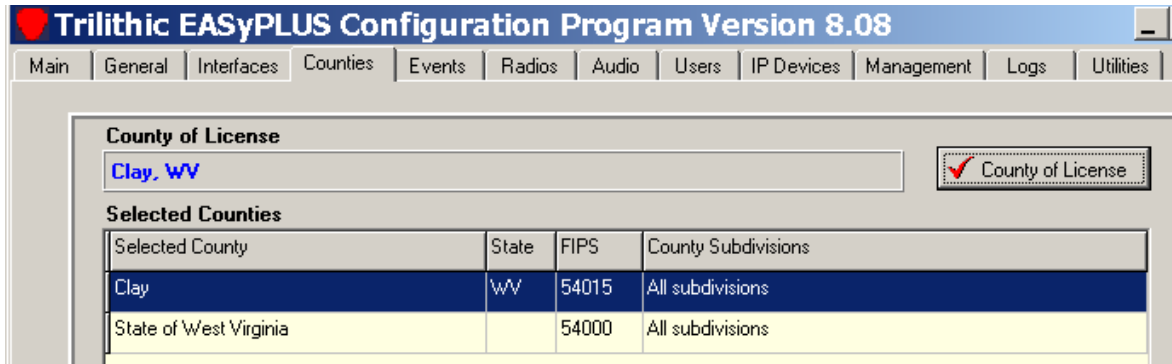


Select West Virginia from the drop-down menu and highlight your county of license. Click OK.

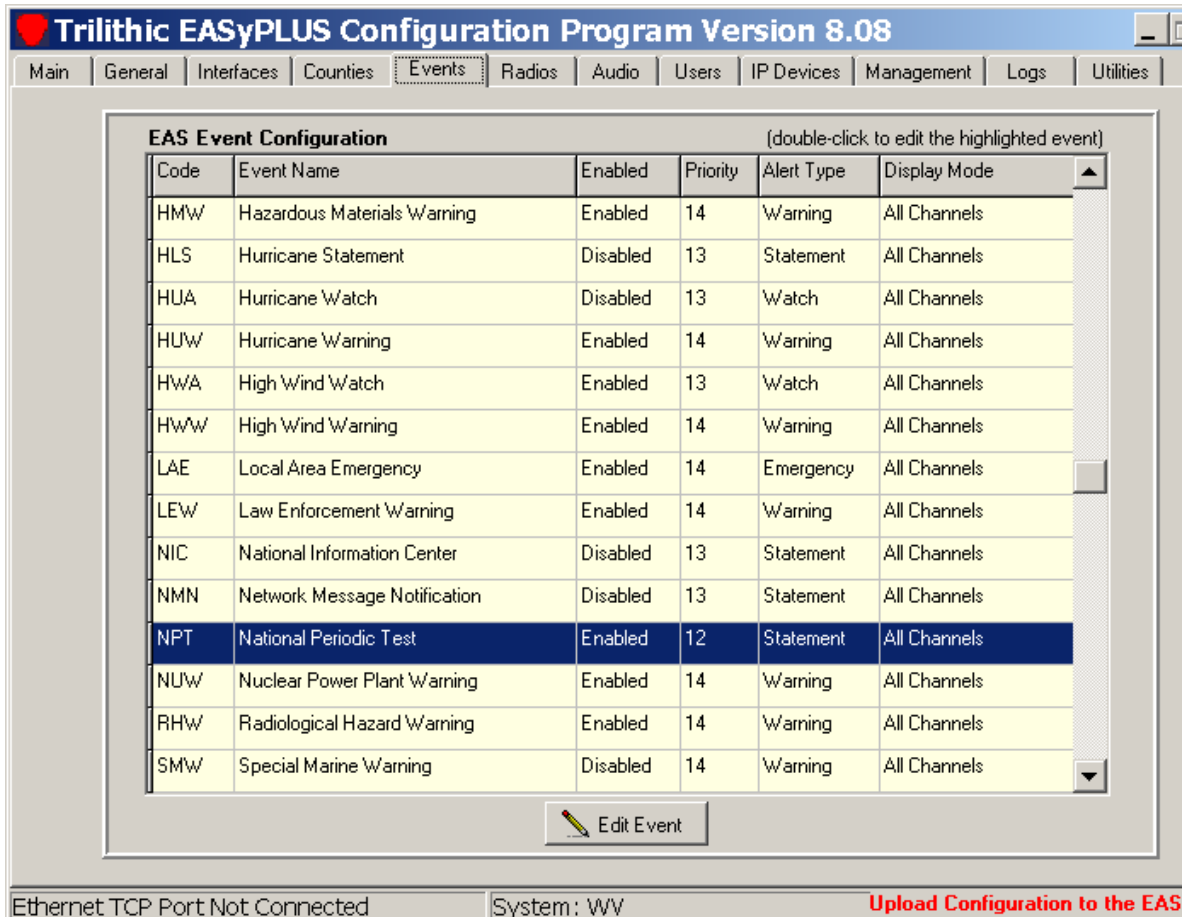


The State of West Virginia should appear in the Counties list.

Select your county of license in the list and click the County of License button.

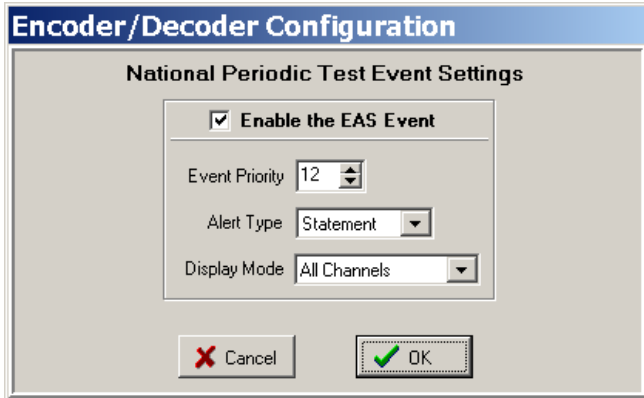


On the Events tab, highlight the NPT (National Periodic Test) and click the Edit Event button.



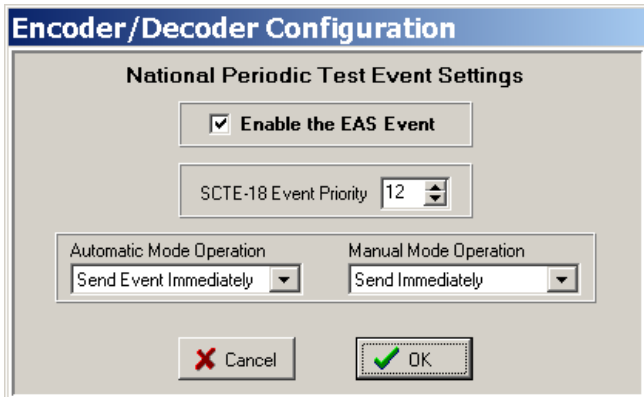
Click the "Enable the EAS Event" checkbox so that a checkmark appears.

EASyPLUS: Make sure the Display Mode is set to All Channels and the Event Priority is 12 or higher. Click OK.



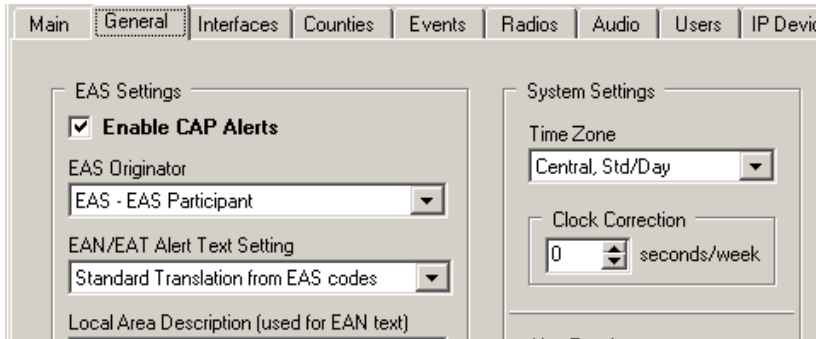
The dialog box is titled "Encoder/Decoder Configuration" and contains a section for "National Periodic Test Event Settings". It features a checked checkbox labeled "Enable the EAS Event". Below this, there are three dropdown menus: "Event Priority" set to 12, "Alert Type" set to Statement, and "Display Mode" set to All Channels. At the bottom, there are "Cancel" and "OK" buttons.

EASyCAST: Make sure the Automatic and Manual Mode delays are set to Send Immediately and the Event Priority is 12 or higher. Click OK.

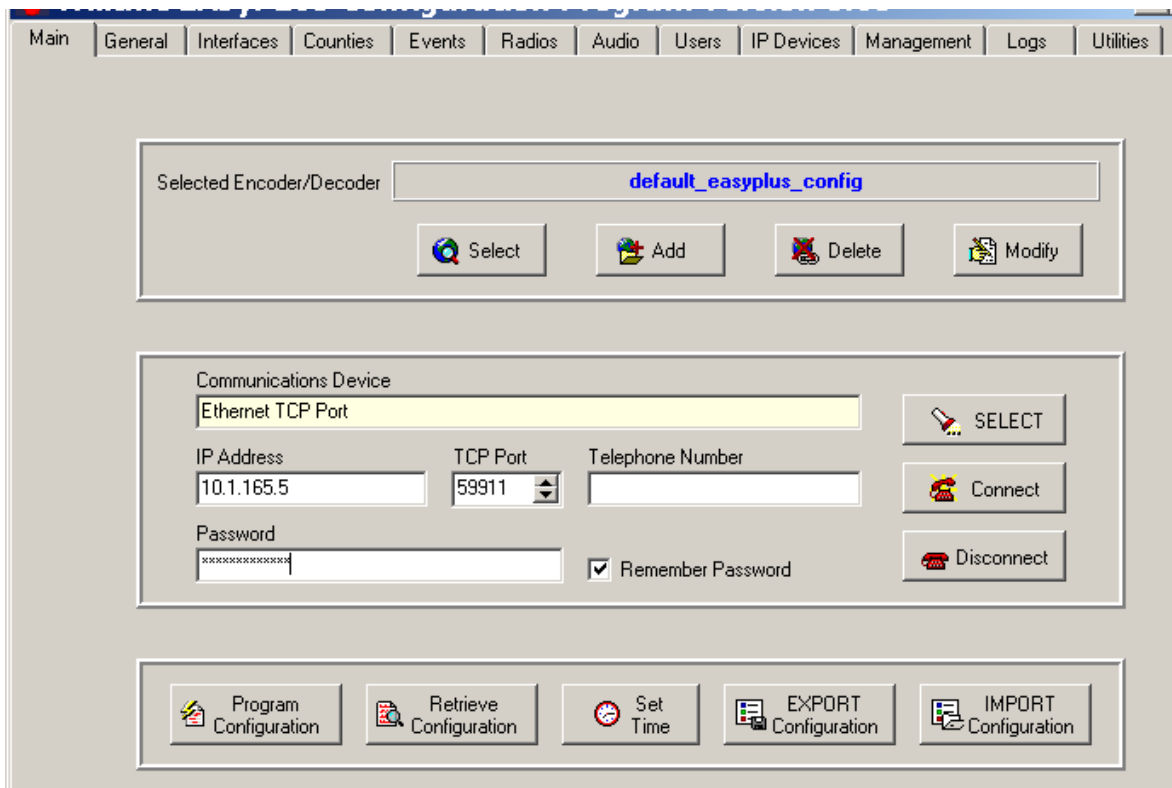


The dialog box is titled "Encoder/Decoder Configuration" and contains a section for "National Periodic Test Event Settings". It features a checked checkbox labeled "Enable the EAS Event". Below this, there is a dropdown menu for "SCTE-18 Event Priority" set to 12. Further down, there are two dropdown menus: "Automatic Mode Operation" set to Send Event Immediately and "Manual Mode Operation" set to Send Immediately. At the bottom, there are "Cancel" and "OK" buttons.

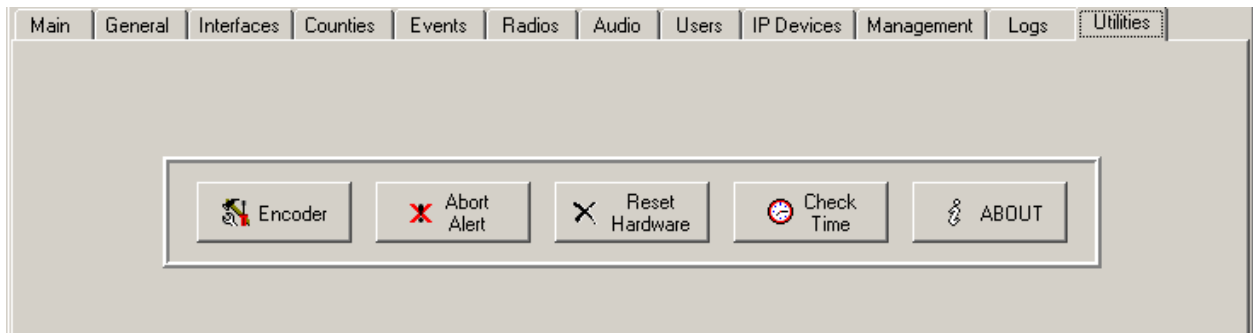
On the General tab of the software, turn on the Enable CAP Alerts checkbox



On the Main tab of the software, click the Program Configuration button at the bottom left.



Once the programming completes, click the Reset Hardware button on the Utilities tab.



The manuals for the EASyPLUS and EASyCAST can be found from the Windows® Start menu under Start--All Programs--Trilithic--EASyPLUS or Start--All Programs--Trilithic--EASyCAST or at the following web addresses:

EASyPLUS: http://vault.trilithic.com/eas/documents/manuals/easyplus_encoder-decoder_operation_manual_v8-8.pdf

EASyCAST: http://vault.trilithic.com/eas/documents/manuals/easycast_encoder-decoder_operation_manual_v8-8.pdf